

EMERSON ControlWave (Ethernet) – Free Tag

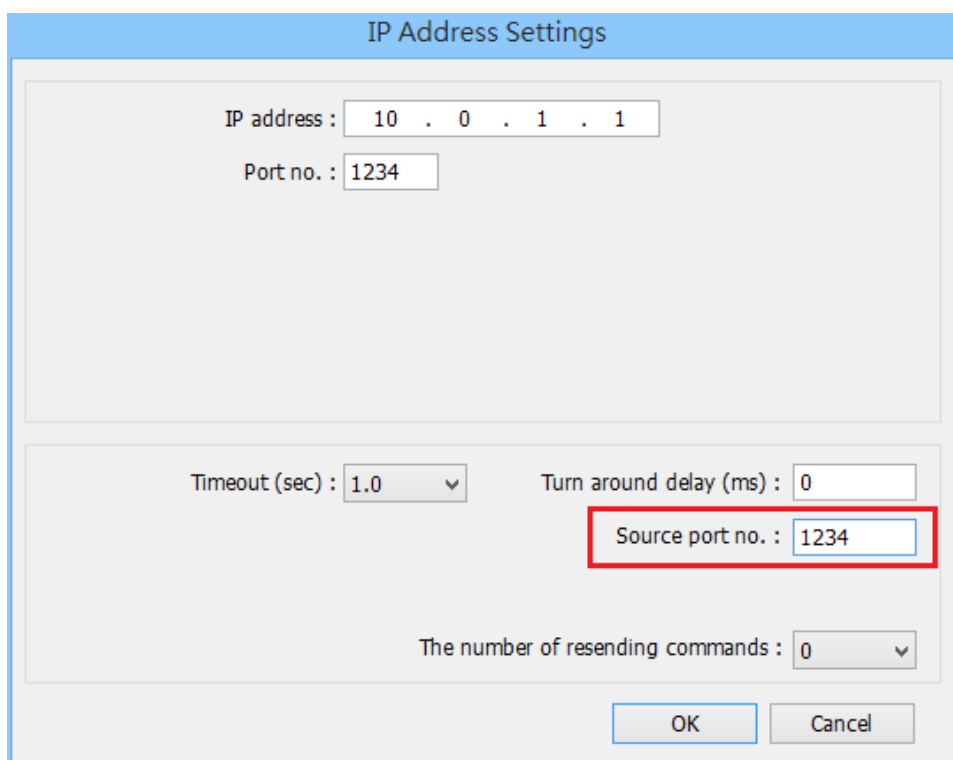
Names

Supported Series: EMERSON ControlWave MICRO

Website: <http://www2.emersonprocess.com/en-US/Pages/Home.aspx>

HMI Setting:

Parameters	Recommended	Options	Notes
PLC type	EMERSON ControlWave (Ethernet) – Free Tag Names		Use UDP
PLC I/F	Ethernet		
Port no.	1234		
Source port no.	1234		



The screenshot shows a dialog box titled "IP Address Settings". It contains the following fields:

- IP address : 10 . 0 . 1 . 1
- Port no. : 1234
- Timeout (sec) : 1.0 (dropdown menu)
- Turn around delay (ms) : 0
- Source port no. : 1234 (highlighted with a red box)
- The number of resending commands : 0 (dropdown menu)

At the bottom of the dialog box, there are two buttons: "OK" and "Cancel".

Support Device Type:

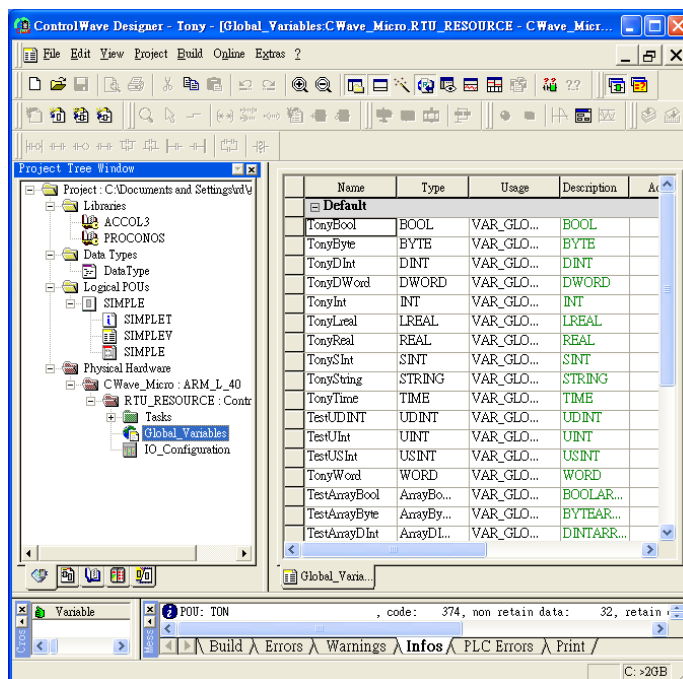
Data type	EasyBuilder data format	Memo
Bool	bit	
Byte	16-bit BCD, Hex, Binary, Unsigned	8-bit
SInt	16-bit BCD, Hex, Binary, Signed	8-bit
USInt	16-bit BCD, Hex, Binary, Unsigned	8-bit
Word	16-bit BCD, Hex, Binary, Unsigned	16-bit
Int	16-bit BCD, Hex, Binary, Signed	16-bit
UInt	16-bit BCD, Hex, Binary, Unsigned	16-bit
DWord	32-bit BCD, Hex, Binary, Unsigned	32-bit
DInt	32-bit BCD, Hex, Binary, Signed	32-bit
Real	32-bit Float	32-bit
UDInt	32-bit BCD, Hex, Binary, Unsigned	32-bit
LInt	64-bit Signed	64-bit
ULInt	64-bit Unsigned	64-bit
LWord	64-bit Unsigned	64-bit
Double	64-bit Float	64-bit

Note1: For device types: **DWord** / **DINT** / **UDINT** / **Real** , error may occur if the value exceeds 7 digits (million).

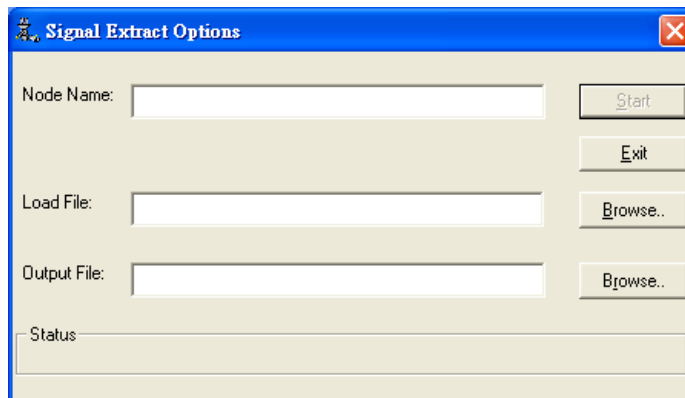
Note2: EBPro V6.03.02 or later supports 64 bits data type (**cMT Series only**), but please note that the address limit range is 48 bits in maximum.

PLC Setting:

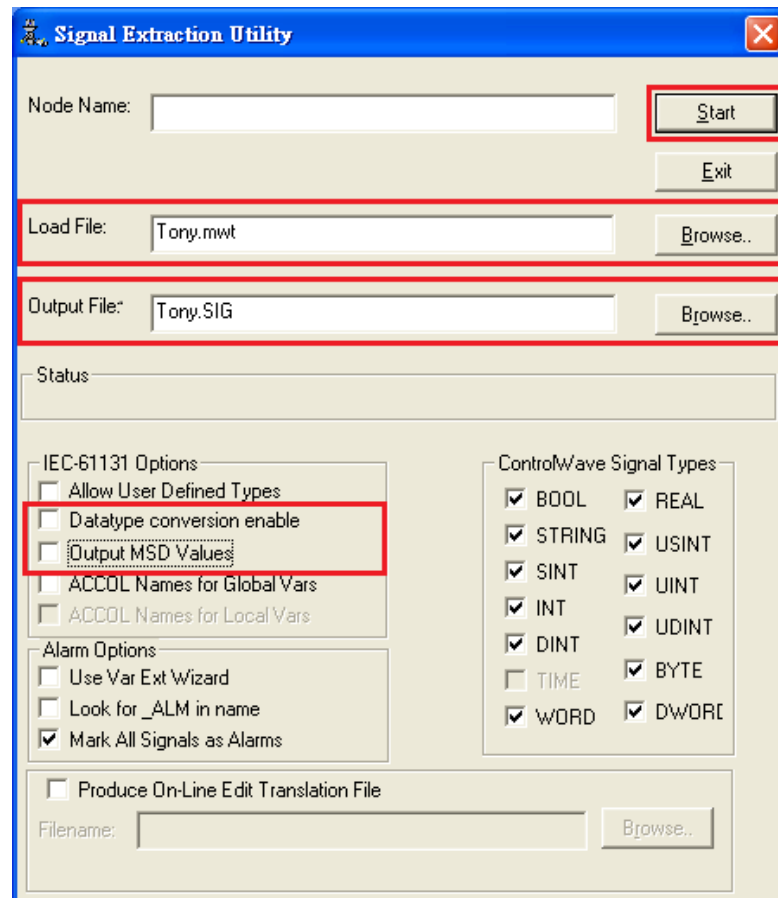
1. Under **Global Variables** create the tags, a tag name with over 20 words can affect communication, please avoid it.



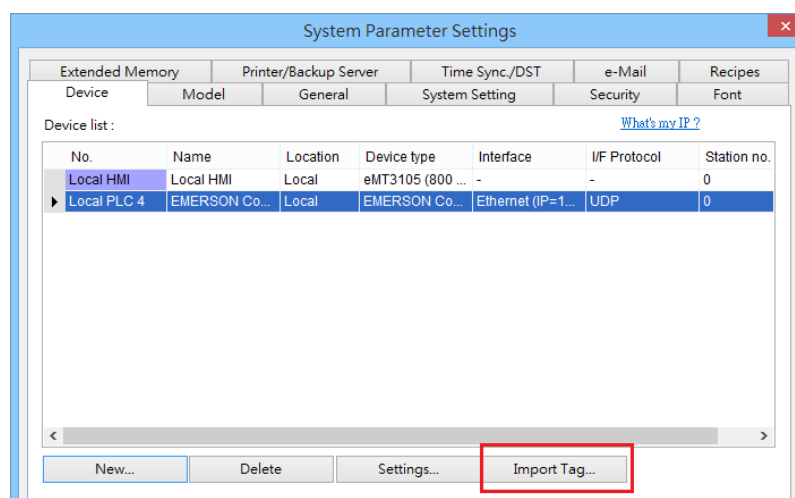
2. Open the program from **Programs -> OpenBSI Tool -> Common Tools -> Signal Extractor**.



- Browse for the file name in **Load File** field, and then the **Output File** field will automatically generate the SIG file name. In **IEC-61131 Options** group box, deselect **Datatype conversion enable** and **Output MSD Values** check boxes, and then click **Start** to generate the file for tag import.



- Import the tags after adding the driver in EasyBuilder.



Wiring Diagram:

Ethernet cable:

